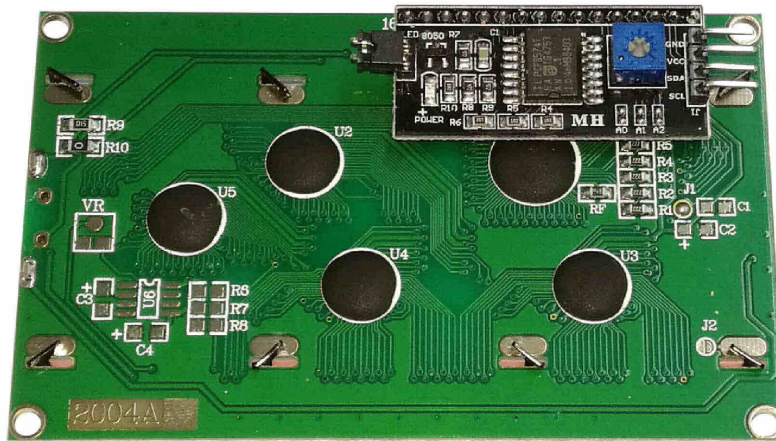
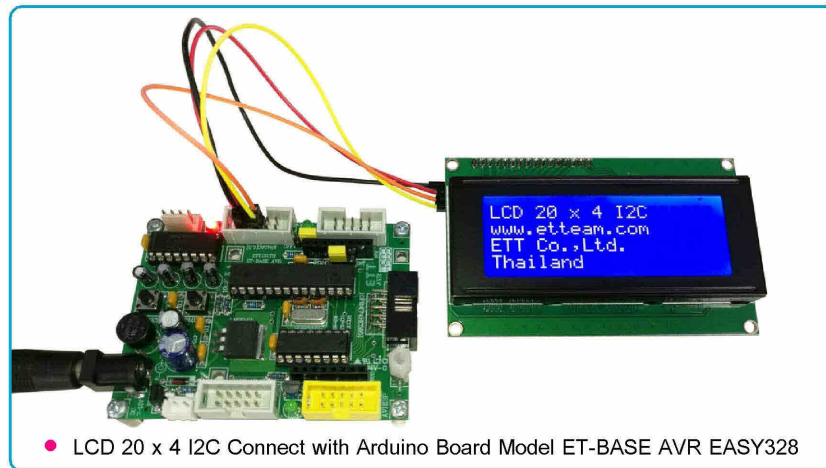


LCD 20 x 4 I2C (A-LC-C-00028)



It is LCD with 20-Character 4-Line, blue BACKLIGHT and white font (STN NEGATIVE BLUE). The display is I2C Interface that saves amount of I/O of CPU when connecting with LCD. It provides example program for using with Board Arduino; for example, connecting to I2C Boards from ETT directly like ET-ESP8266-RS485, ET-MEGA32U4-RS485 and etc.



• LCD 20 x 4 I2C Connect with Arduino Board Model ET-BASE AVR EASY328

SPECIFICATIONS of LCD 20x4 I2C

- LCD type is 20-Character 4-Line and blue BACKLIGHT (STN NEGATIVE BLUE)
- Only use 4 Cables for I2C-BUS Interface; +5VDC, SDA, SCL, and GND. Moreover, it can connect 8-LCD together in the same I²C BUS (Must set each ADDRESS differently by choosing the soldering point).
- IC No.PCF8574A or PCF8574 is used to extend I²C PORT to connect to LCD
- PCB Size: 92 x 60mm.; Display Size: 82 x 32mm.
- Use Power Supply 5VDC, 40mA Current (BACKLIGHT is enabled (ON) while running)
- Complete set includes Board LCD, CD-ROM Manual and Example Program for using on Arduino